

# Rampage Version 10.5

## PDF Trap Engine revs up

PDF Trap Engine has matured quickly. First released in Version 10.3, it eliminated PDF-to-PostScript conversion and, in doing so, processed PDF natively. This provided the ability to process transparent effects within unflattened PDF. Version 10.4, which began shipping at the end of the second quarter, added the ability to process flattened PDF from Quark 7 and from other sources. The next step was to refine PDF Trap Engine in Version 10.5 with the following legacy features:

- > RGB-to-CMYK conversion within PDF files
- > Varnish and bump plate creation in the Trap Editor
- > Dieline support
- > Object-based screening
- > Support for composite grayscale

## Metrix works with Rampage

Metrix from LithoTechnics ([www.lithotechnics.com](http://www.lithotechnics.com)) is an automatic layout calculator for commercial printers. Used by estimators, CSRs, planners, and prepress operators, it can instantly calculate optimum layouts for flat, folded, and bound work. JDF from Metrix can be input to Rampage Version 10.5 and above. Under development is the ability to assign Rampage processing instructions to a job from within Metrix. Rampage will process the job without operator intervention as soon as the pages are submitted via Rampage Remote or through the Rampage Client.

## Xerox presses integrate with workflow

Rampage can now communicate with Xerox presses that include an EFI controller. Instead of sending a generic TIFF or PS file, Rampage and Xerox “speak the same language,” resulting in a more streamlined workflow and faster throughput. Check with your Rampage Dealer or with Rampage Systems regarding specific models and configuration requirements.



# Other Version 10 features

Support for Quark 7 & Preps 5.3

Multiple proof queues

Proof ganging

Bookproof for duplexing lasers

Monitor proof rotation

RPD support for:

- 8-color Epsoms
- Canon 6400/8400
- SpinJet 4000
- HP 4000/5000

Pick-a-plate for proofing

Versioning

"Jump to" Trap Editor on the fly

Ink density highlighting

Trap PSDs in the Trap Editor

Profile creation privileges

Standby from the jobs tab

Support for Version 4 ICC profiles

Object-based Screening

Batch Pick-a-plate

Job status window

Date and time stamps on RPD inkjets

Gap offset for forms production

Support for Imposstrip

Multiple dieline export

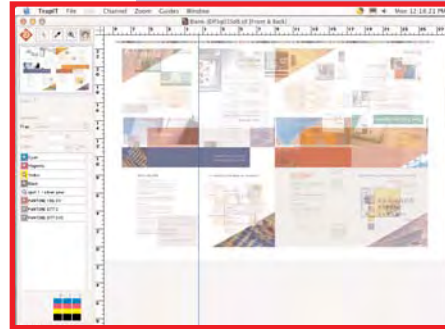
Drill-down within Trap Editor

Pitstop Server integration

Trim white borders on proofs

PDF prescan for compliance settings

Ability to reorder inks & set opacity for proofs



Softproof overlay to check backup

Page Slots:				
	Page#	Sec	Flat#	Flat Name
	1	1	1	1234-FallC
	2	1	2	1234-FallC
	3	1	5	1234-FallC
	4	1	6	1234-FallC
	5	1	6	1234-FallC
	6	1	5	1234-FallC
	7	1	2	1234-FallC
	8	1	1	1234-FallC
	9	1	3	1234-FallC

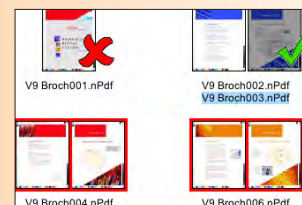
Page map utility for re-slotting pages imposed via JDF

New Rampage Options are supported in V10.5

INKdrop Option for web offset

In-RIP Color Management

Version 2 of Rampage Remote



www.rampageinc.com  
781-891-9400